

ST. JOSEPH THE WORKER CATHOLIC CHURCH

MISSION STATEMENT

ST. JOSEPH THE WORKER is a Eucharistic community of believers commissioned through our Baptism to share the Gospel message of Jesus Christ with all people. Out of our diversity we create unity through respect for every person, common celebrations, sacramental worship, Christian education of all ages, and outreach programs.

THE HOLY FAMILY OF JESUS, MARY AND JOSEPH DECEMBER 28, 2025

WELCOME!

We are pleased that you have chosen to worship here today and hope you will find this community a place where your faith can be nourished. Visit the Parish Center or www.sjwchurch.com.

MASSES

Saturday

8:30 a.m.

5:30 p.m. (Vigil) English

7:00 p.m. (Vigil) Spanish

Sunday

7:30 a.m. Vietnamese

9:00, 10:30 a.m. English

12:00 p.m. Spanish

Monday - Friday

6:30, 8:30 a.m.

PASTORAL STAFF

Pastor

Rev. Alberto Villalobos

Associate Pastors

Rev. Eric Mejia

Rev. Quoc Vo

Deacon

Dn. Augusto "Gus" Mora

School Principal

Stephanie Guilbault

Faith Formation Director

Bill Sparks

Youth Ministry and Confirmation

J. P. Fernandez

Religious Education

Karina Villanueva

Business Manager

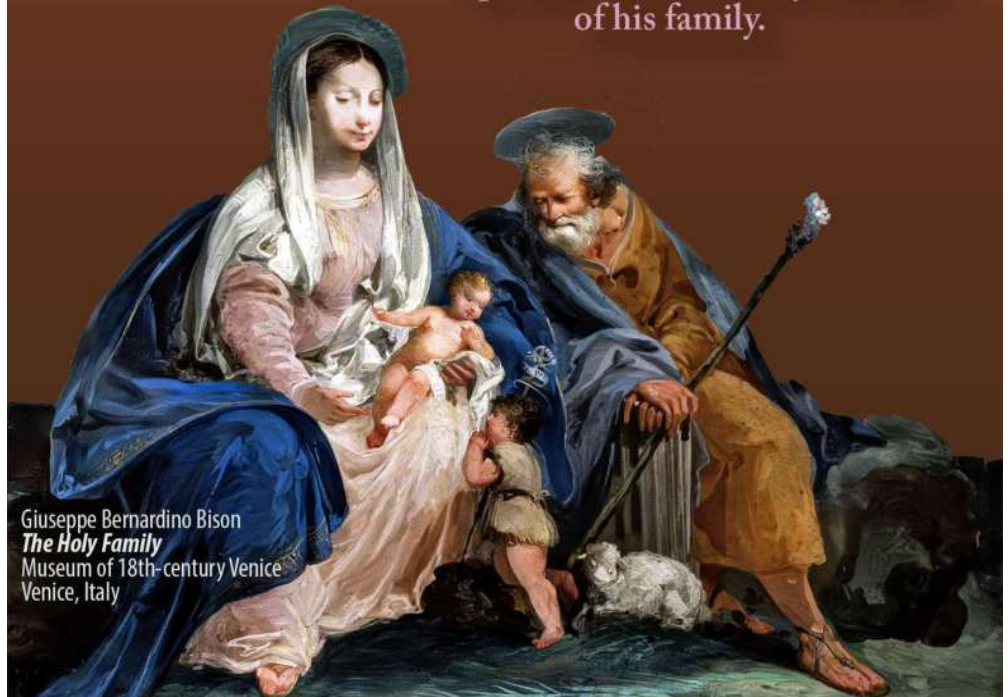
Mike Stafford

Parish Secretary

Angela Escobar

The LOVE of the FAMILY

In this Sunday's Gospel from Matthew, we hear how in Christ all prophecies are fulfilled. After the visit from the Magi, Joseph has a dream to flee to Egypt with the mother and child. When he returned, he went and settled in the town of Nazareth. And Jesus, who was called a Nazorean in fulfillment of the scriptures, grew up there surrounded by the love of his family.



Giuseppe Bernardino Bison
The Holy Family
Museum of 18th-century Venice
Venice, Italy

St. Joseph the Worker Catholic Church • 19855 Sherman Way • Winnetka, California

Phone (818) 341-6634 • Fax (818) 341-3875 • www.sjwchurch.com • Email parish@sjwchurch.com

St. Joseph the Worker School • 19812 Cantlay Street • Winnetka, CA 91306-3005 • Phone (818) 341-6616 • www.sjwschool.net

Parish Center Mailing Address • 19808 Cantlay Street • Winnetka, CA 91306-3005

Parish Center Hours: Mon.-Fri.: 8:00 a.m.-12:00 p.m. and 1:00 -7:00 p.m. • Sat.: 8:00 a.m.-12:00 p.m. • Sun.: Closed

READINGS FOR THE WEEK

Sunday: Sir 3:2-6, 12-14/Col 3:12-21 or 3:12-17/Ps 128:1-2, 3, 4-5/Mt 2:13-15, 19-23

Monday: 1 Jn 2:3-11/Ps 96:1-2a, 2b-3, 5b-6/Lk 2:22-35

Tuesday: 1 Jn 2:12-17/Ps 96:7-8a, 8b-9, 10/Lk 2:36-40

Wednesday: 1 Jn 2:18-21/Ps 96:1-2, 11-12, 13/Jn 1:1-18

Thursday: Nm 6:22-27/Ps 67:2-3, 5, 6 and 8/Gal 4:4-7/Lk 2:16-21

Friday: 1 Jn 2:22-28/Ps 98:1, 2-3ab, 3cd-4/Jn 1:19-28

Saturday: 1 Jn 2:29-3:6/Ps 98:1, 3cd-4, 5-6/Jn 1:29-34

Sunday: Is 60:1-6/Ps 72:1-2, 7-8, 10-11, 12-13/Eph 3:2-3a, 5-6/Mt 2:1-12

MASS INTENTIONS

To have a Mass said for a loved one or for another intention, stop by the Parish Center to make arrangements.

Sunday December 28

- 7:30 a.m. Ngo and Nguyen Family (Thanksgiving)
- 7:30 a.m. Giuse Vu Van Cu (RIP)
- 9:00 a.m. SJW Parishioners (Intentions)
- 9:00 a.m. Rebecca Villagracia (RIP)
- 10:30 a.m. Elena and Jesus Mendez (Thanksgiving)
- 10:30 a.m. Frank and Norma Fabregas (Thanksgiving)
- 12:00 p.m. Margarita Pensado (RIP)
- 12:00 p.m. Daniel and Manuel Gonzalez (RIP)

Monday December 29

- 6:30 a.m. SJW Parishioners (Intentions)
- 8:30 a.m. SJW Parishioners (Intentions)

Tuesday December 30

- 6:30 a.m. SJW Parishioners (Intentions)
- 8:30 a.m. SJW Parishioners (Intentions)

Wednesday December 31

- 6:30 a.m. SJW Parishioners (Intentions)
- 8:30 a.m. Mary Baby Papippallil (RIP)

Thursday January 1

- 6:30 a.m. No Mass
- 8:30 a.m. SJW Parishioners (Intentions)

Friday January 2

- 6:30 a.m. No Mass
- 8:30 a.m. Jesus Escobar (Birthday)

Saturday January 3

- 8:30 a.m. Memorial Society
- 5:30 p.m. SJW Parishioners (Intentions)
- 7:00 p.m. SJW Parishioners (Intentions)

Sunday January 4

- 7:30 a.m. Teresa Tran Thi Thuy Thanh (RIP)
- 7:30 a.m. Phero Vu Van Thuong (RIP)
- 9:00 a.m. SJW Parishioners (Intentions)
- 10:30 a.m. Baltazar and Leonor Vazquez (RIP)
- 12:00 p.m. Daniel and Manuel Gonzalez (RIP)

OFFICE CLOSED

The Parish Center and all Parish facilities will be closed on Thursday, January 1. We will open again on Friday, January 2 at 8:00 a.m.

A Blessed New Year!

PARISH LIFE

GOSPEL MEDITATION - ENCOURAGE DEEPER UNDERSTANDING OF SCRIPTURE

December 28, 2025

The Holy Family of Jesus, Mary and Joseph

Matthew 2:13-15, 19-23

When I was ten, my dad gathered our family around the table in small-town Vermont and told us we were moving to the big desert city of Phoenix, Arizona. We were leaving behind family, friends, and everything familiar. None of us knew what to expect.

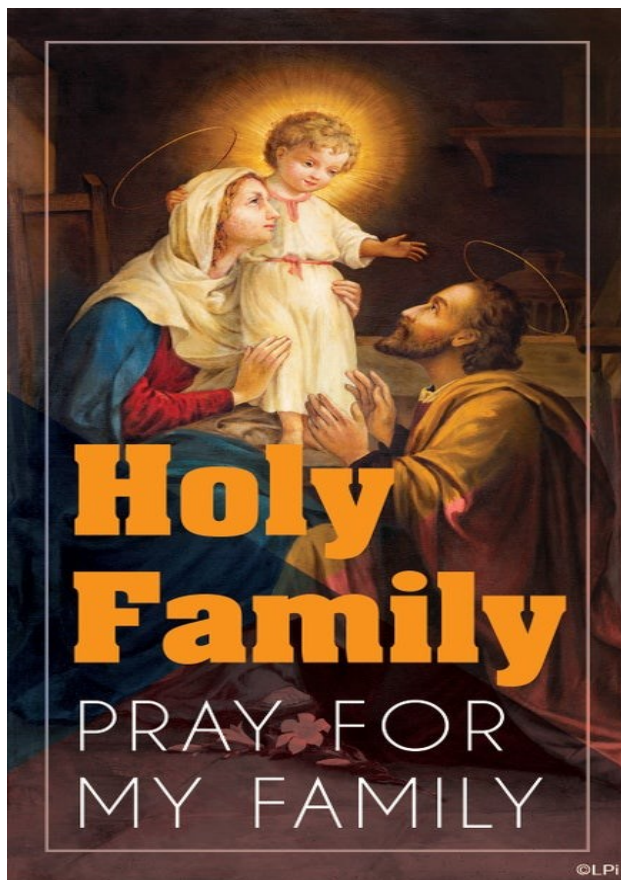
But something beautiful happened. As we made the move together, our family grew closer. In retrospect, I'm amazed at my parents' courage to go on that adventure. Even as a kid I realized our family found, in that challenge, a deeper unity and mutual love.

In today's Gospel, Joseph is told: **"Rise, take the child and his mother, and flee..." (Matthew 2:13, 20).** First to Egypt, then later to Israel. The Holy Family is frequently challenged to move and change, to adapt to God's will for them, in order to find safety in the midst of threat. It's not just an idiosyncratic story about survival. It's a spiritual pattern for all of us. Every Christian family is called to be a kind of sanctuary, especially in a world full of noise, busyness, and fear.

May I make a practical application for us? The Lord's Day, Sunday, is perhaps the most practical way we imitate this dynamic we see in Joseph and his family. Sunday is not meant to be just like every other day, filled with errands and stress. It's meant to be a day set apart; a holy "escape" into rest, worship, joy, and peace. A day to rise, take your family, and flee, into God's presence.

— Father John Muir

©LPI





PARISH LIFE

EUCCHARISTIC ADORATION

We invite you to be in the presence
of the **Blessed Sacrament** every Friday
from 5:00 p.m. to 7:00 p.m. in the church



ST. VINCENT DE PAUL NEWS

Your food donation is very well appreciated. Please bring the items to the SVDP donation bins at the entrances of the church or on Saturday morning at the SVDP pantry. When making donations to the needy of the parish please make checks payable to: The St. Vincent de Paul Society and take them to the Parish Center or visit the SVDP page on the parish website and you can donate online through PayPal.

CHARISMATIC PRAYER GROUP

Are you seeking to grow spiritually? Come and join us in the church or via Zoom (ID: 832 8380 4536 PW: 760419) every Thursday night from 7:00pm to 9:00pm for an evening of praise and worship, bible reflection, group sharing, video presentation and talks to help us grow in faith.

Learn about the activities of our various ministries: Intercessory, Healing, Liturgy, Marian, Evangelization, Pastoral, Service and be an active participant in our Charismatic community.



PRE - BAPTISMAL CLASSES

Pre-Baptism Classes are available in English and Spanish for parents and godparents, once a month. Please call the Parish Center (818) 341-6634 for more information.

DEVOTIONS/PRAYER GROUPS

Rosary

Monday - Saturday 9:00 a.m. (Church)

Friday 7:00 p.m. (Church)

Eucharistic Adoration

Friday 2:00 p.m. - 7:00 p.m. (Church)

Grupo de Oración

Miércoles 7:00 p.m. (Salón Parroquial)

Charismatic Prayer Group

Thursday 7:00 p.m. (Church)

SACRAMENTS

Confessions

Saturday 3:30 p.m. - 5:00 p.m.

Confirmation Process (Grades 8th - 12th)

Year One - Bimonthly

Tuesdays 7:00 - 8:30 pm OR Sundays 9:30 - 11:00 am

Year Two - Bimonthly

Tuesdays 7:00 - 8:30 pm OR Sundays 9:30 - 11:00 am

Information: JP Fernandez, ext. 1018

Rite of Christian Initiation of Adults (RCIA)

Information: Bill Sparks, ext. 1012.

Baptisms, Weddings, Funerals

Call the Parish Center.

ANointing OF THE SICK

This sacrament of healing is received by those who are seriously ill, approaching serious surgery, or near death. Please contact the Parish Center to arrange a convenient time. If a parishioner who has not been anointed is near death, please call the Parish Center at any hour.

PLEASE PRAY FOR THE SICK

Wendy Pelamati, Hazel Villanueva, Sofia Mckee, Raul Andia, Juana Ibañez, Joseph Alvarez, Kurt Backe, Sisters Erlinda and Angelina Pocasangre Escobar, Victoria Spinoza, Dolores Rodriguez Calle, Maria Ines Medina, Brenda Aguilar, Ana Cristina Seabra, Natalia Camarillo, Mary Zangari, Benny De La Cueva, Carlos Saenz, Gilberto Venegas, Daniel Argott, Barbara Darcy

If you have a loved one or friend in our parish community who would like a visit from a Eucharistic Minister to the Sick please call the Parish Center.

FROM DEATH TO NEW LIFE

Please remember in your prayers all those who have recently lost a loved one.

RELIGIOUS EDUCATION

Office Hours: Monday – Thursday, 9:30 a.m. – 5:00 p.m.
Information: Karina Villanueva, ext. 1016.

Schedule of Classes

Elementary Grades 1–5 English

Wednesday, 4:00 p.m.–5:30 p.m. or

Saturday, 9:00 a.m.–10:30 a.m.

Elementary Grades 1–5 Spanish

Saturday, 11:00 a.m.–12:30 p.m.

Middle School Grades 6–8 English

Wednesday, 7:00 p.m.–8:30 p.m.

Special Education

Wednesday, 5:00 p.m.–7:00 p.m.

Elementary (Vietnamese)

Sunday, 10:00 a.m.

RCIA

(RITE OF CHRISTIAN INITIATION OF ADULTS)

Curious about Catholicism and want to know more? Interested in becoming a Catholic? Would you like to receive the Sacraments of Initiation?

Information: Bill Sparks, ext. 1012.

Inquiry Classes:

Adults (English)

St. Elizabeth Ann Seton Room

Sundays 12:00 p.m.

Adults and Youth or Teens (Spanish)

Our Lady of Guadalupe Room

Fridays 7:00 p.m. – 8:30 p.m.

Adults (Vietnamese)

St. Therese of Lisieux/St. Martin de Porres Room

Mondays 7:00 p.m. – 9:00 p.m.

Youth or Teen 12-18 years (English)

St. Elizabeth Ann Seton Room

Tuesdays 7:30 p.m. – 8:30 p.m.

Children 7-12 years (English)

St. Elizabeth Ann Seton Room

Tuesdays 6:00 p.m. – 7:00 p.m.

Children 7-12 years (Spanish)

St. Therese of Lisieux/St. Martin de Porres Room

Fridays 7:00 p.m. – 8:30 p.m.

CHRISTIAN INITIATION PROCESS

The Christian Initiation Process invites unbaptized adults and children age 7 and older who wish to prepare to receive the sacraments of Christian initiation, Baptism, Confirmation and Eucharist. Also invited are those who wish to complete their Initiation sacraments by receiving Confirmation and Eucharist, and those non-Catholics and who wish to integrate into the Catholic Church. Please contact Bill Sparks at (818) 341-6616 ext. 1012.

EDUCATION/FAITH FORMATION

St. Joseph the Worker

A FULLY ACCREDITED TK TO 8TH GRADE SCHOOL

**Called to Lead.
Inspired to Love.
Committed to Learn.**

We are a diverse community where
all are welcome.

Our vision is forming faith-filled leaders through
love, learning, and service.

United as one Body in Christ,
we nurture every child's unique potential
in a caring, Catholic community.

Call us:

(818) 341-6616

Visit our website:

www.sjworkerschool.org

At SJW, a Catholic Education is affordable for ALL!
Financial Assistance available for up to 50% of Tuition

United in Faith and Community



St. Joseph the Worker School

Creating Tomorrow's Leaders Through Faith, Academics, and Service for Over 65 Years!

St. Joseph the Worker School's Philosophy

Our Saint Joseph the Worker School community has a values-centered education committed to the fourfold ministry of the Church: worship, love, service, and witness. Parents are the primary educators of their children; the faculty and staff are vital collaborators with parents in nurturing each student's spiritual, social, physical, and academic growth in order to foster a love of learning as a lifelong adventure. We affirm that each child is unique; with dignity and respect, we guide each student to attain his/her fullest potential while recognizing the presence of God within themselves and all they do. We are committed to nurturing a community who encourages understanding and appreciation of cultural diversity, we define ourselves as members of the one Body of Christ.

St. Joseph the Worker School's Mission Statement

St. Joseph the Worker is a Catholic parish school in the Archdiocese of Los Angeles. By affirming and modeling the virtues Jesus lived and taught, the school community reflects the parish's Catholic identity. As a parish school, we serve the community foremost by providing a caring, Catholic, educational environment dedicated to fostering each student's ability to grow academically, spiritually, physically, and socially. Together with the family, the faculty and staff provide the students with a foundation for success from Transitional Kindergarten through 8th grade to high school and college, helping students develop into autonomous, moral, and responsible adolescents and adults.

St. Joseph the Worker School's Student Non-Discrimination Policy

The school, mindful of its mission to be a witness to the love of Christ for all, admits students regardless of race, color, national origin, and/or ethnic origin to all rights, privileges, programs, and activities generally accorded or made available to students at the school.

The school does not discriminate on the basis of race, color, disability, medical condition, sex, or national and/or ethnic origin in the administration of educational policies and practices, scholarship programs, and athletic and other school-administered programs, although certain athletic leagues and other programs may limit participation and some archdiocesan schools operate as single-sex schools.

While the school does not discriminate against students with special needs, a full range of services may not always be available to them. Decisions concerning the admission and continued enrollment of a student in the school are based upon the student's emotional, academic, and physical abilities and the resources available to the school in meeting the student's needs.



Let it be known to all who enter St. Joseph the Worker School that Jesus Christ is the reason for our school, the unseen but ever-present teacher in all its classes, the model of its faculty, and the inspiration for its staff and students.



PARISH LIFE

GIVING RESOLUTIONS

As you make your special donation to St. Joseph the Worker, please think about your commitment to supporting your parish in 2026.

Already an e-giving subscriber?

- Review your giving history and consider increasing your regular Donation and schedule special donations
- To update your donation details, go to www.sjwchurch.com, click on e-giving

Not yet an e-giver?

- E-giving is easy and offers many benefits
- To learn more and enroll, go to the parish website - www.sjwchurch.com - click on e-giving

Envelope user?

- Use your weekly offering and special envelopes regularly
- Assess your financial commitment and consider an increase in your donation
- To request an envelope packet, call the Parish Center.

MASS INTENTIONS

We are accepting Mass Intention Requests until March. You may download and print the Mass Intention Request form from our website or get one at the Parish Center. Complete the form and deliver or mail it to the Parish Center with your \$10 per Mass donation. A check payable to St. Joseph the Worker Catholic Church is preferred; cash is accepted (exact amount, please).

SJW MEMORIAL SOCIETY

St. Joseph the Worker Memorial Society is intended as a meaningful and beautiful way for persons to remember their beloved deceased or to express their condolences to friends who have lost a loved one. Persons enrolled in the Memorial Society will share in the spiritual benefits of special Masses and prayers offered throughout the year, every year. A Mass is offered for those enrolled every first Saturday of the month at our 8:30 a.m. Mass. The enrollment list is kept in the Parish Center and is accessible during office hours. Each memorial is presented in a handsome leatherette folder, containing an enrollment card where the name of the person remembered is inscribed, along with the person who enrolled the deceased. The leatherette folder with personalized enrollment card is particularly suitable on the occasion of a death, to bring to a viewing or funeral, or to send as an anniversary remembrance. Call the Parish Center to make arrangements.

SAFEGUARD THE CHILDREN

Start the New Year reflecting on the protection of children and vulnerable persons

As we start the New Year and commemorate the Solemnity of Mary, the Holy Mother of God, we remember that Mary's life was devoted to the good care and protection of her Son and to lead all to God the Father. This season also reminds us, as parents and safe adults, of the beauty, dignity, and vulnerability of the children we are called to safeguard. Prayer is also a major part remembering victims, survivors, thrivers and all who are involved in the work of protecting God's children. We pray to our Mother of Good Counsel asking her to protect all children and vulnerable persons. For the full reflection, read the VIR-TUS® article "Mother of Good Counsel Protect the Vulnerable" at lacatholics.org/did-you-know/.

IN THE COMMUNITY

RESPECT LIFE

Crisis Pregnancy Hotline (800) 973-7334

Abortion Recovery Help (877) 467-3463;

www.rachelsvineyard.org

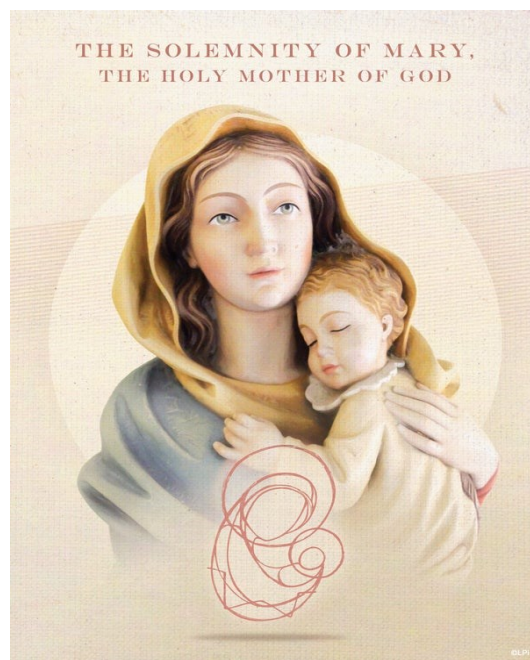
Angels Way Maternity Home (818) 346-2229

VALLEY FAMILY CENTER

We are located in the city of San Fernando. All services are in English/Spanish. Counseling services include: Marriage, family and child. Special groups: Teen girls, children 5 - 12, children of divorced couples, victims of abuse, children's bereavement group, parenting educational classes, domestic violence perpetrator groups (as needed) Sliding scale fees. Call (818) 365-8588.

RETRouvaille

Marriage Help – Retrouvaille has helped tens of thousands of couples at all stages of disillusionment or misery in their marriage. This program can help you too. For confidential information about, or to register for the next program call: (661) 257-7980 or email: ornelasdachs@sbcglobal.net or visit the web site at www.HelpOurMarriage.com



EMAIL SCAMS

Don't be a victim!

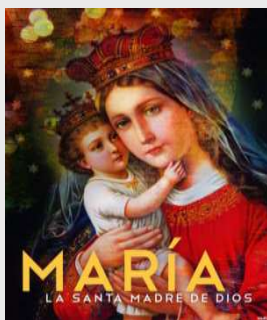
If you receive suspicious emails, do the following:

- Take time to consider your actions before responding to suspicious email messages.
- If in doubt, call the published main number of the parish, school or administrative office from whom the email claims to have been sent to authenticate the email message.
- Do not respond to the email if you doubt its origin.
- Please know that your priests at St. Joseph the Worker would never email you asking for money.



LECTURAS DE LA SEMANA

Domingo: Eclo 3, 2-6. 12-14/Col 3, 12-21 o 3, 12-17/Sal 128, 1-2. 3. 4-5/Mt 2, 13-15. 19-23
Lunes: 1 Jn 2, 3-11/Sal 95, 1-2. 2-3. 5-6/Lc 2, 22-35
Martes: 1 Jn 2, 12-17/Sal 95, 7-8. 8-9. 10/Lc 2, 36-40
Miércoles: 1 Jn 2, 18-21/Sal 95, 1-2. 11-12. 13/Jn 1, 1-18
Jueves: Nm 6, 22-27/Sal 66, 2-3. 5. 6 y 8/Gal 4, 4-7/Lc 2, 16-21
Viernes: 1 Jn 2, 22-28/Sal 97, 1. 2-3. 3-4/Jn 1, 19-28
Sábado: 1 Jn 2, 29-3, 6/Sal 97, 1. 3-4. 5-6/Jn 1, 29-34
Domingo: Is 60, 1-6/Sal 71, 1-2. 7-8. 10-11. 12-13/Ef 3, 2-3. 5-6/Mt 2, 1-12



PROTEGIENDO A LOS NIÑOS

Comience el nuevo año reflexionando sobre la protección de los niños y las personas vulnerables

Al comenzar el nuevo año, conmemoramos la solemnidad de María, la Santa Madre de Dios, y recordamos que la vida de María estuvo dedicada al buen cuidado y protección de su Hijo y a guiar a todos hacia Dios Padre. Esta temporada también nos recuerda, como padres y adultos responsables, la belleza, la dignidad y la vulnerabilidad de los niños a los que estamos llamados a proteger. La oración también es una parte importante para recordar a las víctimas, los supervivientes y todos los que participan en la labor de proteger a los hijos de Dios. Rezamos a nuestra Madre del Buen Consejo pidiéndole que proteja a todos los niños y personas vulnerables. Para obtener una copia de VIRTUS © "Mother of Good Counsel Protect the Vulnerable" (Madre del buen consejo protege a los vulnerables) visita lacatholics.org/did-you-know/.

REQUISITOS PARA LA CELEBRACION DE QUINCE AÑOS

1. Reunirse con la secretaria parroquial o llamarla al (818) 341-6634, ext. 1003 para hacer arreglos no antes de 5 meses de la fecha deseada.
2. Presentar una copia u original de los certificados de Bautismo y Primera Comunión.
3. Deben estar ya confirmadas, en el programa de confirmación o mostrar prueba de que están registradas, ANTES DE QUE UNA FECHA PUEDA SER RESERVADA.
4. Asistir a misa regularmente.
5. La familia debe ser feligrés de la iglesia San José Obrero, ya sea porque vive dentro de los límites de nuestra parroquia, o es miembro registrado.
6. Bajo circunstancias especiales, podemos considerar familias de otras parroquias, si la fecha deseada está disponible. La cuota para los que no son feligreses es lo que su propia parroquia cobre por una misa de 15 años.
7. Requerimos un depósito no reembolsable de \$200 para reservar la fecha.

VIDA PARROQUIAL

ADORACIÓN EUCARÍSTICA

Los invitamos a estar en la presencia del Santísimo Sacramento todos los viernes de 5:00pm a 7:00pm en la iglesia. **Por las fiestas navideñas no tendremos Adoración Eucarística hasta el 2 de enero.**

Los Primeros Viernes tenemos el Santo Rosario a las 7:00 p.m. seguido de la misa en español a las 7:30 p.m.



MEDITACIÓN DEL EVANGELIO

Jesús y su familia saben lo que es emigrar, cambiar de lugar y moverse con rapidez porque son perseguidos. Ellos vivieron en carne propia los efectos de esta situación. Quizá nosotros tenemos algún familiar o amigo que actualmente sufre las penurias de dejar su hogar, su escuela o su trabajo. José y María huyen por la amenaza de peligro que pesaba sobre ellos: "Levántate, toma al niño y a su madre, y huye a Egipto. Quédate allí hasta que yo te avise, porque Herodes buscará al niño para matarlo" (Mateo 2:13). Padre, madre e hijo huyeron hacia donde Dios les indicó, para salvar al niño. Este es un fiel reflejo de lo que representa la Sagrada Familia de Nazaret. Celebrar la fiesta de la Sagrada Familia durante la Navidad debe animarnos con esperanza, deseando que nuestras propias familias sean un lugar donde se respire amor y alegría entre sus miembros. ¿Cómo recibo hoy a las familias de mis hermanos y hermanas? ¿Cómo es mi convivencia con ellos?

"Ustedes, familias, son la esperanza de la Iglesia y del mundo. Con su testimonio del Evangelio pueden ayudar a Dios a realizar su sueño; pueden contribuir a acercar a todos los hijos de Dios, para que crezcan en la unidad y aprendan qué significa para el mundo entero vivir en paz como una gran familia" (Papa Francisco). Oremos por nuestras familias, deseando que, en este día dedicado a la Familia de Nazaret, imitemos su esperanza en Dios y su unidad en todo momento.

©LPI

OFICINA CERRADA

La oficina parroquial y todos los cuartos del Centro de Conferencias estarán cerrados el **jueves 1ero de enero**. ¡Muy Feliz Año Nuevo!

¿QUIERES PROTECCIÓN, PERMISO Y PAPELES®?
¡Yo quiero que el próximo MILAGRO SEA EL TUYO!™




Abogada Alexandra
Abogada de Inmigración

ESCANEA y AGENDA tu consulta.


LLAMA AHORA AL
(626) 884 4749

Se requiere de un pago de \$100.00 por hora de consulta. El pago de \$100.00 por hora de consulta se aplica a la hora de consulta. El pago de \$100.00 por hora de consulta se aplica a la hora de consulta. El pago de \$100.00 por hora de consulta se aplica a la hora de consulta.

Place Your Ad Here and Support our Parish!

Instantly create and purchase an ad with

AD CREATOR STUDIO



4lpi.com/adcreator

catholicmatch®
California




CatholicMatch.com/CA

ADT-Monitored Home Security
Get 24-Hour Protection From a Name You Can Trust

- Burglary
- Fire Safety
- Flood Detection
- Carbon Monoxide

833-287-3502




CATHOLIC CEMETERIES & MORTUARIES

EVERLASTING FAITH. EVERLASTING LIFE.

A ministry of the Church serving the faithful.

Learn about our 11 locations in Los Angeles, Ventura and Santa Barbara counties

(213) 637-7801 CatholicCM.org



DOES YOUR NONPROFIT ORGANIZATION NEED A NEWSLETTER?

Engaging, ad-supported print and digital newsletters to reach your community.

Visit lpicommunities.com



OUR COMMUNITY NEWSLETTER

Scan to contact us!

ENVIOS DE PAQUETES
Paqueteria a Todo Mexico



Pregunte por especiales

818.884.5718

NEED AN ELECTRICIAN?

Old Wire Electric

The Old House Wiring Specialist!

818.533.1975

Lic 600983 Local Parishioner

\$25 OFF

A LIVING TRUST
will keep your loved ones out of Probate Court

Trust • Will • POA • Deed • Divorce
Family • Guardianship

1/3 Cost of Lawyer

FREE Consultation
C: 818-518-4353

Helen Tomhave
Local Parishioner




www.TrustedLegalDoc.com

WE'RE HIRING!
AD SALES EXECUTIVES

BE YOURSELF.
BRING YOUR PASSION.
WORK WITH PURPOSE.

- Paid training
- Some travel
- Work-life balance
- Full-Time with benefits
- Serve your community

Contact us at careers@4lpi.com or www.4lpi.com/careers



BASTIAN & PERROTT
OSWALD MORTUARY


Ed Perrott - FDR-1955
18728 Parthenia St., Northridge

Cremations/Advance Planning (818) 886-8600 FD# 1198

ADT-Monitored Home Security
Get 24-Hour Protection From a Name You Can Trust

- Burglary
- Fire Safety
- Flood Detection
- Carbon Monoxide

833-287-3502



LET'S GROW YOUR BUSINESS
Place Your Ad Here and Support Our Parish!

CONTACT ME Tara Holley

tholley@4LPi.com • (800) 950-9952 x2134



Susana Torres
REALTOR / DRE: 02063528

10% of the proceeds from sale will be donated to our parish or school

El 10% de mis granancias de la venta oh compra de tu casa seran donadas a la parroquia o escuela

(818) 445-2071 SusannaTorresRealtor@gmail.com



WE APPRECIATE OUR ADVERTISERS!

SUPPORT OUR ADVERTISERS!

Where LA Catholics Go to Stay Connected.

ANGELUS

Subscribe today for just \$30.00 **\$19.95**

Two easy ways to order: AngelusNews.com/Bulletin | 844-245-6630

SUPPORT OUR PARISH



Special for all Parishioners
General & Cosmetic Dentistry for the Whole Family

Complete Exam \$25.00
FREE Whitening Kit with Paid Cleaning

Henide Arias D.D.S.
PARISHIONER

La Doctora Habla Español
(818) 881.8940

Monday - Saturday & SAME DAY Emergency Appointments
19231 Victory Blvd Suite 252 (North Wing) Reseda




IF YOU LIVE ALONE

MDMedAlert!™ STARTING AT **\$19.95/mo.**

- Ambulance/Police
- Family/Friends
- GPS & Fall Alert

CALL NOW! 800.809.3570

md-medalert.com






WHERE THERE'S A WILL THERE'S A WAY

St. Joseph the Worker is a special place, where we are touched daily by God's presence among us. Rooted in the legacy of our founding parishioners, we have become the dynamic faith community we cherish today. A gift to the future of our parish will support its spiritual richness and many good works for generations to come.

Please remember St. Joseph the Worker in your will or trust. To learn more about planned giving opportunities that can benefit St. Joseph the Worker, please contact the Parish Center or Karen Dundee, Planned Giving Manager, Archdiocese of Los Angeles; (213) 637-7510; plannedgiving@la-archdiocese.org.

To make a gift: Our correct legal title is: The Roman Catholic Archbishop of Los Angeles, A Corporation Sole, for the benefit of St. Joseph the Worker Catholic Church

PARISH REGISTRATION

To promote a spirit of belonging, we encourage all who worship here to become registered parishioners. Having registered makes the process much easier when it is time for infant baptism, school or religious education enrollment, weddings, when asked to be a baptismal or confirmation sponsor, and funerals. Simply attending Mass here does not make you a registered parishioner. Please call or visit the Parish Center to request a registration form or complete the form online at the parish website: www.sjwchurch.com. Also, please contact the Parish Center if you have a new address or phone number. The staff is able to serve you better if the parish records are accurate.

REQUESTING USE OF PARISH FACILITIES

Parish and School groups that would like to reserve any facility in the parish must contact Angela Escobar in the Parish Center (818) 341-6634, ext. 1003. Only rooms reserved in advance are open. If your group needs to cancel a reservation, please let Angela know so that the room can be made available to another group. Also, if your group needs a particular room arrangement, please bring a copy of the requested floor plan to the Parish Center a week ahead.

BULLETIN AND MASS ANNOUNCEMENTS

The deadline (strictly observed) for submission of **Bulletin** and **Mass** announcements is the previous Monday at noon. Deliver a copy of the bulletin or Mass announcement to the Parish Center or email it to Angela Escobar: angela_escobar4@hotmail.com. To submit a photo to accompany the bulletin text, send a digital file (jpeg or TIF), color or black/white, 300 dpi. See the front cover for the parish mailing address and fax number. For more information please contact Angela Escobar, (818) 341-6634, ext. 1003.



St. Vincent de Paul Society

food pantry

*We give food to
80 or more families a month
We serve about
100 meals a week*

**Hunger is year-round.
Let us serve
our neighbors in need.**

**WE NEED YOUR HELP
TO FILL THE PANTRY**

**Place food donations in the
St. Vincent de Paul boxes
at the church entrances any time
Non-perishable food products ONLY
Please check expiration dates**

ESPECIALLY NEEDED

- Canned meat products (beef and chicken)**
- Chunky soups and stews**
- Beef and bean chili**
- Canned tuna**
- Macaroni and cheese**
- Spaghetti and sauce**
- Boxed mashed potatoes**
- Peanut butter and jelly**
- Canned fruits**
- Rice, beans**
- Cereal, oatmeal**
- Soap, detergent**
- Toothpaste, toothbrushes**



Giving Made Easy with SJW egiving

**Electronic Giving Is
Convenient, Practical, and Safe**

- Make recurring or one-time donations
- Set up automatic deductions from your bank account or by credit/debit card
- Contribute even when circumstances prevent you from coming to Mass
- Assure that the parish has a steady, predictable cash flow
- No cost to you and no long-term commitment
- Secure and confidential
- Access your records from anywhere, 24/7

SIGN UP NOW
Go to www.sjwchurch.com. Click on e-giving
Register and become an e-giver

INFORMATION: Mike Stafford, Parish Business Manager
818.341.6634, ext. 1015 • sjwegiving@yahoo.com