



**ST. JOSEPH THE WORKER
CATHOLIC CHURCH**

2ND SUNDAY OF ADVENT

DECEMBER 10, 2023

MISSION STATEMENT

ST. JOSEPH THE WORKER is a Eucharistic community of believers commissioned through our Baptism to share the Gospel message of Jesus Christ with all people. Out of our diversity we create unity through respect for every person, common celebrations, sacramental worship, Christian education of all ages, and outreach programs.

WELCOME!

We are pleased that you have chosen to worship here today and hope you will find this community a place where your faith can be nourished. Visit the Parish Center or www.sjwchurch.com.

MASSES

Saturday

8:30 a.m.

5:30 p.m. (Vigil) English

7:00 p.m. (Vigil) Spanish

Sunday

7:30 a.m. Vietnamese

9:00, 10:30 a.m. English

12:00 p.m. Spanish

Monday - Friday

6:30, 8:30 a.m.

PASTORAL STAFF

Pastor

Rev. Alberto Villalobos

Associate Pastor

Rev. Thuan Nguyen

Associate Pastor

Rev. R. Carlos Nava

Deacon

Dn. Augusto "Gus" Mora

School Principal

Stephanie Guilbault

Faith Formation Director

Bill Sparks

Youth Ministry and Confirmation

J. P. Fernandez

Religious Education

Karina Villanueva

Business Manager

Mike Stafford

Parish Secretary

Angela Escobar

HOPE **PEACE** JOY LOVE

This Sunday we hear the beginning of the gospel according to mark in which, John the Baptist announces the coming of Jesus proclaiming, in the words of the prophet Ishaia, "Prepare the way of the Lord, make straight his path" (Mk 1:3) and calling for repentance. John's promise was that one mightier than he, the Messiah, will baptize in the Holy Spirit and that Peace will come with forgiveness after true repentance.



St. Joseph the Worker Catholic Church • 19855 Sherman Way • Winnetka, California

Phone (818) 341-6634 • Fax (818) 341-3875 • www.sjwchurch.com • Email parish@sjwchurch.com

St. Joseph the Worker School • 19812 Cantlay Street • Winnetka, CA 91306-3005 • Phone (818) 341-6616 • www.sjwschool.net

Parish Center Mailing Address • 19808 Cantlay Street • Winnetka, CA 91306-3005

Parish Center Hours: Mon.-Fri.: 8:00 a.m.-12:00 p.m. and 1:00 -7:00 p.m. • Sat.: 8:00 a.m.-12:00 p.m. • Sun.: Closed

READINGS OF THE WEEK

Sunday: Is 40:1-5, 9-11/Ps 85:9-10, 11-12, 13-14 (8)/2 Pt 3:8-14/Mk 1:1-8

Monday: Is 35:1-10/Ps 85:9ab and 10, 11-12, 13-14/Lk 5:17-26

Tuesday: Zec 2:14-17 or Rv 11:19a; 12:1-6a, 10ab/Jdt 13:18bode, 19/Lk 1:26-38 or Lk 1:39-47

Wednesday: Is 40:25-31/Ps 103:1-2, 3-4, 8 and 10/Mt 11:28-30

Thursday: Is 41:13-20/Ps 145:1 and 9, 10-11, 12-13ab/Mt 11:11-15

Friday: Is 48:17-19/Ps 1:1-2, 3, 4 and 6/Mt 11:16-19

Saturday: Sir 48:1-4, 9-11/Ps 80:2ac and 3b, 15-16, 18-19/Mt 17:9a, 10-13

Sunday: Is 61:1-2a, 10-11/Lk 1:46-48, 49-50, 53-54 (Is 61:10b)/1 Thes 5:16-24/Jn 1:6-8, 19-28

MASS INTENTIONS**Sunday December 10**

- 7:30 a.m. Legio Phero (RIP)
 7:30 a.m. Phero Vong Dinh Chi (RIP)
 9:00 a.m. Eden Flores (Birthday)
 9:00 a.m. SJW Parishioners (Intentions)
 10:30 a.m. Jesus Mendez (Birthday)
 10:30 a.m. Edmun Anonuevo (RIP)
 12:00 p.m. Marta Molero (RIP)
 12:00 p.m. Aucalla Moler Family (Intentions)

Monday December 11

- 6:30 a.m. Stephen Thai Ta (RIP)
 6:30 a.m. Giuse Phong Nguyen (RIP)
 8:30 a.m. Tito Lee Nguyen (RIP)
 8:30 a.m. Maria Linh Pham (RIP)

Tuesday December 12

- 6:30 a.m. For the son's conversion (Intentions)
 6:30 a.m. Isabel Comia (RIP)
 8:30 a.m. Maria Regina Ramos (RIP)
 8:30 a.m. Otto Gruber (RIP)

Wednesday December 13

- 6:30 a.m. Andrew, Maria and All Souls (RIP)
 6:30 a.m. Ray Ronquillo (RIP)
 8:30 a.m. Honesto Dimayuga (RIP)
 8:30 a.m. Phero Nguyen Van Chanh (RIP)

Thursday December 14

- 6:30 a.m. Mary Luom Phan (RIP)
 6:30 a.m. World Peace
 8:30 a.m. Maria S. Singian (RIP)
 8:30 a.m. Lilibeth Mijarez (RIP)

Friday December 15

- 6:30 a.m. Vincent Steven Pham (RIP)
 6:30 a.m. Abandoned Souls
 8:30 a.m. Adrian S. Catap (RIP)
 8:30 a.m. Mia Jordan Pedraja (Birthday)

Saturday December 16

- 8:30 a.m. Honesto Dimayuga (RIP)
 8:30 a.m. Benancio and Amita Mendez (RIP)
 5:30 p.m. Mi Tu and Thuy Lieu Nguyen (RIP)
 5:30 p.m. The Sutherland Family (RIP)
 7:00 p.m. SJW Parishioners (Intentions)
 7:00 p.m. Cleymán Hernandez (Get Well)

Sunday December 17

- 7:30 a.m. Joseph Thua Dinh (RIP)
 7:30 a.m. Anna Tu Thi Roan (RIP)
 9:00 a.m. Susy Vikki and Marilyn Alvarado (Birthday)
 9:00 a.m. Aynnova Reilly (Get Well)
 10:30 a.m. Rod Ramirez and Camille de Guzman (Birthday)
 12:00 p.m. Consuelo Gonzalez (RIP)
 12:00 p.m. Elizabeth Sandoval (Birthday)

PARISH LIFE**A MESSAGE FROM THE PASTOR**

My Dear Parishioners,

I trust you are doing well and being blessed. Given that Christmas Eve this year falls on Sunday there is some confusion regarding our Sunday Mass obligation. Let me clarify so that there is no confusion. In the morning we celebrate the fourth Sunday of Advent. This fulfills your Sunday Mass obligation. In the evening we have Christmas Vigil Masses. The Vigil Mass does not fulfill your Sunday Mass obligation, it fulfills your Christmas Day Mass obligation. You then don't have to attend Mass on Christmas Day. To be clearer, if you attend the Vigil Mass, you still must attend Mass on Sunday morning or Saturday evening vigil mass. I hope this makes the situation a little clearer.

If you have any questions, just ask me after mass on Sunday.

Blessings,

Fr. Beto

OUR LADY OF GUADALUPE

Tuesday, December 12, all of the Americas will be celebrating the feast in honor of Our Lady of Guadalupe. She has been titled Empress of the Americas, Spain, and the Philippines and Queen of Mexico. This devotion began in 1531, shortly after the Spanish conquest of the Aztec people by Cortez. Early on the morning of December 9, the Indian peasant Juan Diego was en route to Mass when Mary appeared to him. Mary requested that a church be built there "so that in it I can show and send forth all my love, compassion, help and defense." Juan Diego brought the message to Bishop Zumárraga who was skeptical and demanded a sign from heaven. Mary again appeared to Juan Diego telling him where to find fresh flowers to show to the bishop. The young Aztec Christian gathered fresh roses from the frozen ground and cradled them in his rough tilma (cloak) as he returned to the Bishop. Bishop Zumárraga fell to his knees in amazement, not at the sight of a rose in winter, but at the image of the Virgin Mary fixed into the fibers of Juan Diego's tilma. In the astrological beliefs so central to Aztec culture, the sun god and the gods of moon and stars waged a daily battle of light and darkness. Mary's image eclipses the sun whose rays can still be seen. Standing upon the moon, with stars decorating her mantle, she is depicted as greater than, though not destroying, the Indian gods. Mary speaks to Juan Diego in his native language. She has the features and complexion of an Aztec maiden. After the bloody conquest of 1521, the Indians of Mexico were slow to respond to any missionary efforts. Christianity was closely associated with conquest. Just seven years after the apparitions at Tepeyac, however, an estimated four to six million became Christians. Amidst great suffering, the people were consoled by Mary's simple message: "I want to protect you. I want to right the wrongs." In the ensuing four hundred years people have continued to turn to the Virgin of Guadalupe with devotion and confidence in their moments of trial. Mary still looks compassionately upon the poor and renews her promise:

"I will hear your lamentations and remedy your miseries, pains and sufferings. Be not afraid, am I not here, am I not your mother?"

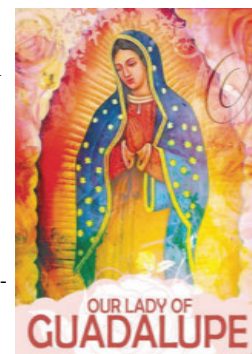
DECEMBER 12

MAÑANITAS - 4:00 A.M.

MASS - 5:00 A.M.

MASS - 7:00 P.M.

Please join us for any or all of these celebrations and the 5:00 a.m. Mass. Also, after the 7:00 p.m. Mass you are all invited to continue the celebration.





PARISH LIFE

EUCCHARISTIC ADORATION

We invite you to be in the presence of the Blessed Sacrament every Friday from 5:00 pm to 7:00 pm in the church.



CHRISTMAS TOY DRIVE



The Society of St. Vincent de Paul is hosting its annual toy drive for children in need within our community. Please take a tag off the Christmas trees which indicates the age and gender of a child. Then, return the tag attached to a wrapped gift for that child and place it under the tree, no later than **Saturday, December 16**. In lieu of a present, gift cards to Target will also be accepted.

The SJW Filipino Ministry
 invites you to
Puttin' On the Glitz
A New Year's Party!
Dinner, Dancing, Raffles, & Live Auction!
Tickets on Sale NOW after all Masses!
\$50 per person
 Saturday, December 30th at 7:00 pm
 SJW Parish Hall
 Dinner from 7:30-8:30 pm
Proceeds benefit St. Joseph the Worker School

RAFFLE TICKETS

Raffle tickets for the Sony 65" Class LED LCD TV and for the Portable Speaker - Bluetooth (proceeds to benefit the parish) are on sale under the pavilion. \$2 each or 6 tickets for \$10, winner does not need to be present.

COFFEE AND DONUTS

The Filipino Ministry is selling coffee, donuts, hot chocolate and fruit after the 7:30 a.m., 9:00 and 10:30 a.m. masses on Sundays.

PRAY FOR YOUR PARISH FINANCES

Bring your full tithes to the church so there will be ample provisions in my Church. Test me in this and see if I don't open up heaven itself to you and pour out blessings

Weekly Goal	12/03/23	Last Year	Change
\$20,000	\$13,876	\$12,854	+8.0%

2023 Env \$6,272 (45.2%) E-giving \$2,443 (17.6%)
 2022 Env \$5,674 (44.1%) E-giving \$2,768 (21.5%)

DEVOTIONS/PRAYER GROUPS

Rosary

Monday - Saturday 9:00 a.m. (Church)
 Friday 7:00 p.m. (Church)

Eucharistic Adoration

Friday 2:00 p.m. - 7:00 p.m. (Church)

Grupo de Oración

Miércoles 7:00 p.m. (Salón Parroquial)

Charismatic Prayer Group

Thursday 7:00 p.m. (Church)

SACRAMENTS

Confessions

Saturday 3:30 p.m. - 5:00 p.m.

Confirmation Process (Grades 8th - 12th)

Year One - Bimonthly
 Tuesdays 7:00 - 8:30 pm OR Sundays 9:30 - 11:00 am
 Year Two - Bimonthly
 Tuesdays 7:00 - 8:30 pm OR Sundays 9:30 - 11:00 am

Information: JP Fernandez, ext. 1018

Rite of Christian Initiation of Adults (RCIA)

Information: Bill Sparks, ext. 1012.

Baptisms, Weddings, Funerals

Call the Parish Center.

ANOINTING OF THE SICK

This sacrament of healing is received by those who are seriously ill, approaching serious surgery, or near death. Please contact the Parish Center to arrange a convenient time. If a parishioner who has not been anointed is near death, please call the Parish Center at any hour.

PLEASE PRAY FOR THE SICK

Wendy Pelamati, Hazel Villanueva, Sofia Mckee, Raul Andia, Juana Ibañez, Joseph Alvarez, Adorable Manabat, Kurt Backe, Sisters Erlinda and Angelina Pocasangre Escobar, Victoria Spinoza, Dolores Rodriguez Calle, Maria Ines Medina, Brenda Aguilar, Ana Cristina Seabra, Natalia Camarillo.

If you have a loved one or friend in our parish community who would like a visit from a Eucharistic Minister to the Sick please call the Parish Center.

FROM DEATH TO NEW LIFE

Your prayers are requested for the repose of the soul of:
 Emilio Custodio

RELIGIOUS EDUCATION

Office Hours: Monday – Thursday, 9:30 a.m. – 5:00 p.m.

Information: Karina Villanueva, ext. 1016.

Schedule of Classes

Elementary Grades 1–5 English

Wednesday, 4:00 p.m.–5:30 p.m. or

Saturday, 9:00 a.m.–10:30 a.m.

Elementary Grades 1–5 Spanish

Saturday, 11:00 a.m.–12:30 p.m.

Middle School Grades 6–8 English

Wednesday, 7:00 p.m.–8:30 p.m.

Special Education

Wednesday, 5:00 p.m.–7:00 p.m.

Elementary (Vietnamese)

Sunday, 10:00 a.m.

RCIA

(RITE OF CHRISTIAN INITIATION OF ADULTS)

Curious about Catholicism and want to know more? Interested in becoming a Catholic? Would you like to receive the Sacraments of Initiation?

Information: Bill Sparks, ext. 1012.

Inquiry Classes

Adults (English)

St. Therese of Lisieux/St. Martin de Porres Conference Rooms

Sunday 11:30 a.m.

Adults and Youth or Teens (Spanish)

Our Lady of Guadalupe

Conference Room

Friday 7:00 p.m.–9:00 p.m.

Adults (Vietnamese)

St. Therese of Lisieux/St. Martin de Porres

Conference Rooms

Youth or Teen 12-18 years (English)

Youth Ministry Room (School Building)

Two Wednesdays a month 7:00 p.m.–8:00 p.m.

Children 7-12 years (English)

St. Therese of Lisieux/St. Martin de Porres

Conference Rooms

Two Wednesdays a month 7:00 p.m. –8:00 p.m.

Children 7-12 years (Spanish)

Youth Ministry Room (School Building)

Friday 7:00 p.m.–9:00 p.m.

SAFEGUARD THE CHILDREN

Recognizing the signs of physical abuse

Safe adults should be on the lookout for signs of physical abuse in children in their care. Some signs include frequent bruises or cuts, frequent and unexplained absences or injuries. Physical abuse can include hitting, kicking, shaking, or other forceful actions, resulting in harm or even death. Children who are suffering from physical abuse may be distrustful or reluctant to receive physical contact, and may dress inappropriately for the season, wearing long pants or long-sleeved shirts to hide injuries. For more information, read the VIRTUS® article “Recognizing Child Maltreatment” at lacatholics.org/did-you-know/.

EDUCATION/FAITH FORMATION

YOUTH NEWS / CONFIRMATION

Youth Mass: Every Sunday at 10:30 a.m.

Confirmation Year 1:

Tuesday, December 19, 7:00pm to 8:15pm (Hall) . Joint Sessions with Year 2. Christmas gathering and canned food drive.

Tuesday, January 9, 7:00pm to 8:15pm (Hall) OR Sunday, January 14, 9:00am to 10:15am (YM Room): “Jesus Christ: Our Redeemer”.

Confirmation Year 2:

Sunday, December 10, 9:00am to 10:15am (YM Room):

“Reconciliation”.

Tuesday, December 19, 7:00pm to 8:15pm (Hall) . Joint Sessions with Year 1. Christmas gathering and canned food drive.

Upcoming Service Projects:

Friday, December 15, 6pm to 9pm – Parish Hall- Toy Drive Preparation

Saturday, December 16, 9am to 4pm – Parish Hall – Toy Drive distribution

Youth Ministry Global Events:

July 28, 2025 to Aug. 3, 2025: Jubilee of Young People (ages 13 – 35).

Rome, Italy.

2027 (pending actual dates): World Youth Day (ages 13-35). Seoul, South Korea

Email: jjpf@sjwchurch.com for more information.

RELIGIOUS EDUCATION

For information contact Karina at (818) 341-6634, ext. 1016.



PRE - BAPTISMAL CLASSES

Pre-Baptism Classes are available for parents and godparents in the St. Elizabeth Ann Seton room, once a month.

Please call the Parish Center (818) 341-6634 for more information.



PARISH LIFE

RETIREMENT FUND FOR RELIGIOUS HELP CARE FOR ELDERS

“Thanks to support from the Retirement Fund for Religious, we are now in a much better position to care for our elders,” writes a religious sister. Your donation helps her religious community and hundreds of others provide for aging members and plan for long-term needs. Please give to the Retirement Fund for Religious on December 9 and 10.

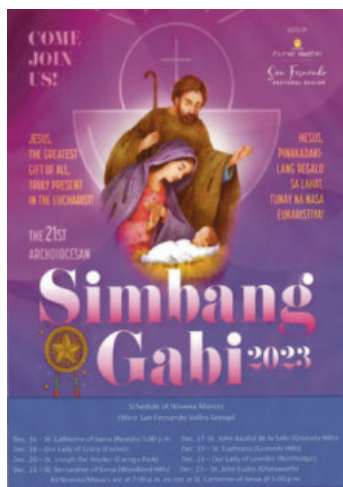
ENVIRONMENT FOR ADVENT & CHRISTMAS

We are asking your assistance with our decorations:

- Lights: String or spool of at least 300 lights or more (68 feet or longer) CLEAR MINI LIGHTS. Bring your donation to the Parish Center by December 17.
- Poinsettia plants: Please bring to the Church anytime after December 18 (Red & white varieties). Add your own intentions with your donated plant.

If you would like to help with the actual decorating, please contact the Parish Center (818) 341-6634 for the times we will be working.

Thank you for your generosity and helping to make our church and grounds beautiful for the Christmas season.



SINH HOẠT GIÁO XỨ

LỜI CHÚA TRONG TUẦN 11-12-2023 ĐẾN 17-12-2023

Thứ hai 11-12:
Trang: 41-43

Thứ ba 12-12: Đức Mẹ Gua-da-lu-pê
Trang: 1869, 79

Thứ tư 13-12: Thánh Lu-xi, trinh nữ, tử đạo
Trang: 46-48

Thứ năm 14-12: Thánh Gio-an thánh giá
Trang: 48-50

Thứ sáu 15-12:
Trang: 50-52

Thứ bảy 16-12:
Trang: 52-53

Chúa nhật 17-12: Chúa nhật III Mùa Vọng
Trang: 57-59

2nd Sunday of Advent • December 10, 2023

IN THE COMMUNITY

RESPECT LIFE

Crisis Pregnancy Hotline (800) 973-7334
Abortion Recovery Help (877) 467-3463;
www.rachelsvineyard.org

Angels Way Maternity Home (818) 346-2229

VALLEY FAMILY CENTER

We are located in the city of San Fernando. All services are in English/Spanish. Counseling services include: Marriage, family and child. Special groups: Teen girls, children 5 - 12, children of divorced couples, victims of abuse, children’s bereavement group, parenting educational classes, domestic violence perpetrator groups (as needed) Sliding scale fees. Call (818) 365-8588.

RETRouvaille

Marriage Help – Retrouvaille has helped tens of thousands of couples at all stages of disillusionment or misery in their marriage. This program can help you too. For confidential information about, or to register for the next program call: (661) 257-7980 or email: ornelasdachs@sbcglobal.net or visit the web site at www.HelpOurMarriage.com



EMAIL SCAMS

Don't be a victim!

If you receive suspicious emails, do the following:

- Take time to consider your actions before responding to suspicious email messages.
- If in doubt, call the published main number of the parish, school or administrative office from whom the email claims to have been sent to authenticate the email message.
- Do not respond to the email if you doubt its origin.
- Please know that your priests at St. Joseph the Worker would never email you asking for money.



LECTURAS DE LA SEMANA

Domingo: Is 40, 1-5. 9-11/Sal 84, 9-10. 11-12. 13-14 (8)/2 Pe 3, 8-14/Mc 1, 1-8

Lunes: Is 35, 1-10/Sal 84, 9 y 10. 11-12. 13-14/Lc 5, 17-26

Martes: Zac 2, 14-17 o Ap 11, 19; 12, 1-6. 10/Jdt 13, 18. 19/Lc 1, 26-38 o Lc 1, 39-47

Miércoles: Is 40, 25-31/Sal 102, 1-2. 3-4. 8 y 10/Mt 11, 28-30

Jueves: Is 41, 13-20/Sal 144, 1 y 9. 10-11. 12-13/Mt 11, 11-15

Viernes: Is 48, 17-19/Sal 1, 1-2. 3. 4 y 6/Mt 11, 16-19

Sábado: Eclo 48, 1-4. 9-11/Sal 79, 2 y 3. 15-16. 18-19/Mt 17, 9. 10-13

Domingo: Is 61, 1-2. 10-11/Lc 1, 46-48. 49-50. 53-54 (Is 61, 10)/1 Tes 5, 16-24/Jn 1, 6-8. 19-28

PROTEGIENDO A LOS NIÑOS

Reconocer las señales de abuso físico

Los adultos de confianza deben estar atentos a signos de abuso físico en los niños bajo su cuidado. Algunos signos incluyen moretones o cortes frecuentes, ausencias o lesiones frecuentes e inexplicables. El abuso físico puede incluir golpes, patadas, sacudidas u otras acciones de fuerza que resulten en daño o incluso la muerte. Los niños que sufren abuso físico pueden ser desconfiados o reacios a recibir contacto físico y pueden vestirse de manera inapropiada para la temporada, usando pantalones largos o camisas de manga larga para ocultar las heridas. Para obtener más información, lea el artículo en inglés de VIRTUS® "Recognizing Child Maltreatment" (Reconociendo el maltrato infantil) en lacatholics.org/did-you-know/.

FONDO PARA LA JUBILACIÓN DE RELIGIOSOS

Los religiosos mayores han ofrecido toda una vida a servir guardando el voto de pobreza. Ahora necesitan su ayuda. Te rogamos que dones a la colecta del Fondo para la Jubilación de Religiosos en la misa de este fin de semana. retiredreligious.org

AMBIENTACION PARA ADVIENTO Y NAVIDAD

Solicitamos su ayuda con nuestras decoraciones:

• **Luces:** Cadena o carrete de al menos 300 luces o más (68 pies o más) MINI LUCES CLARAS. Traiga su donación al Centro Parroquial antes del 17 de diciembre.

• **Plantas de Poinsettia:** tráigalas a la Iglesia en cualquier momento después del 18 de diciembre (variedades rojas y blancas). Incluya sus propias intenciones con la planta donada.



Si desea ayudar con la decoración, comuníquese al Centro Parroquial (818) 341-6634 para conocer los horarios en los que trabajaremos.

Gracias por su generosidad y por ayudar a que nuestra iglesia y nuestros ambientes sean hermosos para la temporada navideña.

VIDA PARROQUIAL

Los invitamos a estar en la presencia del **Santísimo Sacramento** todos los viernes de 5:00 p.m. a 7:00 p.m. en la iglesia.

Los Primeros Viernes tendremos el **Santo Rosario** a las 7:00 p.m. seguido de la misa en español a las 7:30 p.m.



MENSAJE DE NUESTRO PARROCO

Mis queridos feligreses,

Confío se encuentren bien bendecidos. Dado que la Nochebuena de este año cae en domingo, existe cierta confusión con respecto a nuestra obligación de asistir a Misa dominical. Permítanme aclarar para que no haya confusión. Por la mañana celebramos el cuarto domingo de Adviento, esto cumple con la obligación de la Misa dominical. Por la tarde tenemos Misas de Vigilia Navideña. La Misa de Vigilia no cumple con la obligación de la Misa dominical, cumple con la obligación de Misa el día de Navidad, así que si viene a la misa de la Vigilia de Navidad no es necesario asistir a Misa el día de Navidad. Para ser más claro, si asisten a la Misa de Vigilia de Navidad, igualmente deben asistir a Misa el domingo por la mañana o a la vigilia el sábado. Espero que esto aclare un poco la situación.

Si tienen alguna pregunta, hágamelas después de la misa del domingo. Bendiciones,

Padre Beto

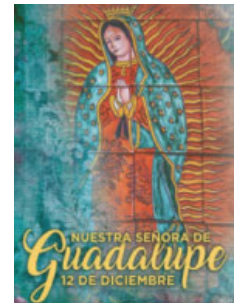
CALENDARIO DE ADVIENTO 2023

Fiesta de Nuestra Señora de Guadalupe

Martes 12 de diciembre

Mañanitas	4:00 a.m.
Misa de la Aurora	5:00 a.m.
Compartimiento	6:00 a.m.

Misa	7:00 p.m.
Compartimiento	8:00 p.m.



SIMBANG GABI (Posada Navideña Filipina)

Miercoles 20 de diciembre Iglesia 7:00 p.m.

El Ministerio Filipino les invita a una Cena Baile

Sábado 30 de diciembre empezando a las 7:00 p.m.

Salón Parroquial

(Pro-fondos escuela parroquial)

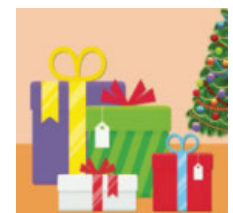
Cena 7:30 p.m. to 8:30 p.m.

¡Cena, Rifas, Subasta en Vivo!
Boletos disponibles después de misa
\$50 per persona



COLECTA DE JUGUETES NAVIDEÑOS

La Sociedad de San Vicente de Paúl organiza su colecta anual de juguetes para niños necesitados dentro de nuestra comunidad. Retire una etiqueta de los árboles de Navidad que indique la edad y el sexo del niño/a. Luego, devuelva la etiqueta adjunta al regalo envuelto para ese niño/a y colóquela debajo del árbol, a más tardar el sábado 16 de diciembre. En lugar de un regalo, también se aceptarán tarjetas de regalo de Target.



**¿Crees que es imposible arreglar?
Queremos ayudarte**




Alexandra Lozano
ABOGADA DE LOS MILAGROS

877-474-6725
REVISAMOS TU CASO GRATIS

Esto no constituye asesoría legal o garantía de resultados. Todos los casos requieren una consulta para determinar si califican.

FREE JUGGLING LESSONS

Danny Truxaw
818 960-2166
Parish member since 1981



Catholic Cruises and Tours




Catholic Cruises and Tours and The Apostleship of the Sea of the United States of America

Take your **FAITH ON A JOURNEY.** Catholic Cruises/Tours to Worldwide Destinations
Holy Land Discovery • Fatima, Lourdes and Shrines of Spain • Grand Catholic Italy
Footsteps of Apostle Paul • Shrines of Alpine Europe • Pilgrimage to Lourdes
Scottish Highlands • Camino, A walking journey for the soul

www.CatholicCruisesandTours.com (CST 2117960-70)
Call us today at 860-399-1785 or email eileen@CatholicCruisesandTours.com

catholicmatch®
California




CatholicMatch.com/CA

Society of St. Vincent de Paul

Help Us Help Others

1-800-974-3571 For donation pick-up



Catholic Cruises and Tours

Take your **FAITH ON A JOURNEY.** Catholic Cruises/Tours to Worldwide Destinations
Holy Land Discovery • Fatima, Lourdes and Shrines of Spain • Grand Catholic Italy
Footsteps of Apostle Paul • Shrines of Alpine Europe • Pilgrimage to Lourdes
Scottish Highlands • Camino, A walking journey for the soul

www.CatholicCruisesandTours.com (CST 2117960-70)
Call us today at 860-399-1785 or email eileen@CatholicCruisesandTours.com

CATHOLIC CEMETERIES & MORTUARIES

EVERLASTING FAITH. EVERLASTING LIFE.

A ministry of the Church serving the faithful.

Learn about our 11 locations in Los Angeles, Ventura and Santa Barbara counties

CatholicCM.org

DOES YOUR NONPROFIT ORGANIZATION NEED A NEWSLETTER?

Engaging, ad-supported print and digital newsletters to reach your community.

Visit Ipicommunities.com



NEED AN ELECTRICIAN?

Old Wire Electric

The Old House Wiring Specialist!

818.533.1975

Lic 600983 Local Parishioner BBB \$25 OFF

A LIVING TRUST

will keep your loved ones out of Probate Court

Trust • Will • POA • Deed • Divorce
Family, Guardianship, Probate

1/3rd Cost of Lawyer
FREE Consultation

C: 818-518-4353
Helen Tomhave
Local Parishioner

www.TrustedLegalDoc.com



WE'RE HIRING!

AD SALES EXECUTIVES

BE YOURSELF.
BRING YOUR PASSION.
WORK WITH PURPOSE.

- Paid training • Some travel
- Work-life balance
- Full-Time with benefits
- Serve your community

Contact us at careers@4lpi.com or www.4lpi.com/careers



BASTIAN & PERROTT
OSWALD MORTUARY

Ed Perrott - FDR-1955
18728 Parthenia St., Northridge
(818) 886-8600 FD# 1198

Cremations/Advance Planning



A LIVING TRUST

will keep your loved ones out of Probate Court

Trust • Will • POA • Deed • Divorce
Family, Guardianship, Probate

1/3rd Cost of Lawyer
FREE Consultation

C: 818-518-4353
Helen Tomhave
Local Parishioner

www.TrustedLegalDoc.com



WE APPRECIATE OUR ADVERTISERS!

They allow us to print this bulletin. Thank you!

FINDaPARISH.com

Check It Out Today!

The Most Complete Online National Directory of Catholic Parishes

The Most Complete Online National Directory of Catholic Parishes

The VILLAGE AT NORTHRIDGE

Your comfort. Our privilege.

Independent and Assisted Living Residences
SRGseniorliving.com • Call today (818) 477-4081
AN SRG SENIOR LIVING COMMUNITY • RCPE#197607888

Where LA Catholics Go to Stay Connected.

ANGELUS

Subscribe today for just \$30.00 **\$19.95**

Two easy ways to order: AngelusNews.com/Bulletin | 844-245-6630



SUPPORT OUR PARISH



Special for all Parishioners

General & Cosmetic Dentistry for the Whole Family

Complete Exam \$25.00
FREE Whitening Kit with Paid Cleaning

Henide Arias D.D.S.
PARISHIONER

La Doctora Habla Español
(818) 881.8940 We Accept Medical

Monday - Saturday & SAME DAY Emergency Appointments
19231 Victory Blvd Suite 252 (North Wing) Reseda



Protecting Seniors Nationwide

Medical Alert System

\$29.95/Mo. billed quarterly

- One Free Month
- No Long-Term Contract
- Price Guarantee
- Easy Self Installation

Call Today! Toll Free 1.877.801.8608





www.sjwchurch.com

WHERE THERE'S A WILL THERE'S A WAY

St. Joseph the Worker is a special place, where we are touched daily by God's presence among us. Rooted in the legacy of our founding parishioners, we have become the dynamic faith community we cherish today. A gift to the future of our parish will support its spiritual richness and many good works for generations to come.

Please remember St. Joseph the Worker in your will or trust. To learn more about planned giving opportunities that can benefit St. Joseph the Worker, please contact the Parish Center or Kimberly Jetton, Planned Giving Manager, Archdiocese of Los Angeles; (213) 637-7504; plannedgiving@la-archdiocese.org.

To make a gift: Our correct legal title is: The Roman Catholic Archbishop of Los Angeles, A Corporation Sole, for the benefit of St. Joseph the Worker Catholic Church

PARISH REGISTRATION

To promote a spirit of belonging, we encourage all who worship here to become registered parishioners. Having registered makes the process much easier when it is time for infant baptism, school or religious education enrollment, weddings, when asked to be a baptismal or confirmation sponsor, and funerals. Simply attending Mass here does not make you a registered parishioner. Please call or visit the Parish Center to request a registration form or complete the form online at the parish website: www.sjwchurch.com. Also, please contact the Parish Center if you have a new address or phone number. The staff is able to serve you better if the parish records are accurate.

REQUESTING USE OF PARISH FACILITIES

Parish and School groups that would like to reserve any facility in the parish must contact Angela Escobar in the Parish Center (818) 341-6634, ext. 1003. Only rooms reserved in advance are open. If your group needs to cancel a reservation, please let Angela know so that the room can be made available to another group. Also, if your group needs a particular room arrangement, please bring a copy of the requested floor plan to the Parish Center a week ahead.

BULLETIN AND MASS ANNOUNCEMENTS

The deadline (strictly observed) for submission of **Bulletin** and **Mass** announcements is the previous Monday at noon. Deliver a copy of the bulletin or Mass announcement to the Parish Center or email it to Angela Escobar: angela_escobar4@hotmail.com. To submit a photo to accompany the bulletin text, send a digital file (jpeg or TIF), color or black/white, 300 dpi. See the front cover for the parish mailing address and fax number. For more information please contact Angela Escobar, (818) 341-6634, ext. 1003.



ESPECIALLY NEEDED

Canned meat products (beef and chicken)
Chunky soups and stews
Beef and bean chili
Canned tuna
Macaroni and cheese
Spaghetti and sauce
Boxed mashed potatoes
Peanut butter and jelly
Canned fruits
Rice, beans
Cereal, oatmeal
Soap, detergent
Toothpaste, toothbrushes

St. Vincent de Paul Society
food pantry

*We give food to
 80 or more families a month
 We serve about
 100 meals a week*

**Hunger is year-round.
 Let us serve
 our neighbors in need.**

**WE NEED YOUR HELP
 TO FILL THE PANTRY**

**Place food donations in the
 St. Vincent de Paul boxes
 at the church entrances any time
 Non-perishable food products ONLY
 Please check expiration dates**



**Giving Made Easy
 with SJW **e**giving**

**Electronic Giving Is
 Convenient, Practical, and Safe**

- Make recurring or one-time donations
- Set up automatic deductions from your bank account or by credit/debit card
- Contribute even when circumstances prevent you from coming to Mass
- Assure that the parish has a steady, predictable cash flow
- No cost to you and no long-term commitment
- Secure and confidential
- Access your records from anywhere, 24/7

SIGN UP NOW
 Go to www.sjwchurch.com. Click on e-giving
 Register and become an e-giver

**INFORMATION: Mike Stafford, Parish Business Manager
 818.341.6634, ext. 1015 • sjwegiving@yahoo.com**